

## Windham Region Cadastral Data Committee

Joan E. Paskewich

Windham Assessor, CCMA II, SPA

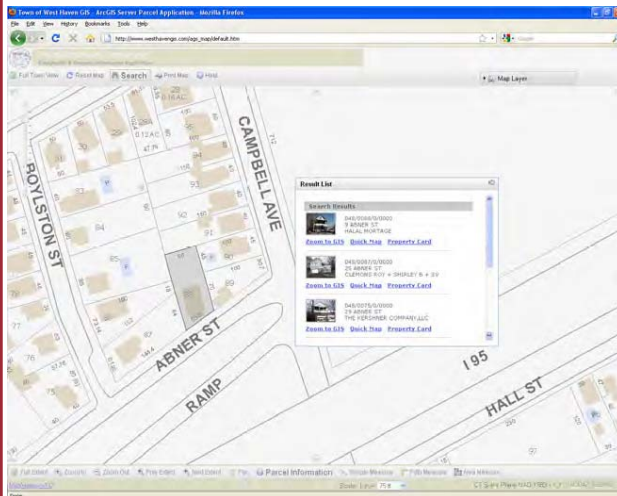
Michael D'Amicol

Coventry Assessor, CCMA II

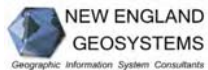
Brian Hathaway

Windham Technology Manager

**Website coming soon!**



Webhosting by:



## Questions?

We are currently working on developing parcel map layers and hope to have our website up and running soon!

If you would like more information, please contact:

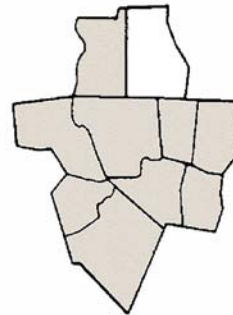
**Jana Butts, AICP**

Senior Planner/GIS Coordinator

or

**Michael Cipriano**

GIS Analyst



Windham Region Council of Governments

Working together for the future of the  
Windham Planning Region

\* Chaplin \* Columbia \* Coventry \*  
\* Hampton \* Lebanon \* Mansfield \*  
\* Scotland \* Windham \* Willington \*



## WINDHAM REGION

## GIS AND CADASTRAL DATA CENTER



## WINCOG

700 Main Street  
Willimantic, CT 06226

Phone: 860-456-2221

Fax: 860-456-5659

E-mail: [gis@wincog.org](mailto:gis@wincog.org)

# WINDHAM REGION GIS & CADASTRAL DATA CENTER

The **Windham Region GIS & Cadastral Data Center** has two primary objectives:

- to assist member towns in the ongoing development of their digital tax parcel maps and databases, and
- to develop a regional website to host geographic information online in an easy-to-use format.

The overall goal of the Windham Region GIS & Cadastral Data Center is to facilitate coordinated planning across disciplines and municipal boundaries by increasing access to municipal mapping information through an online interface. As an integral part of this effort, the Center will provide efficient, ongoing support for municipal GIS tax parcel data development and standardization. The Center will facilitate other forms of GIS data development as well.

## **Municipal Support**

The Windham Region GIS & Cadastral Data Center staff will work primarily with municipal tax assessors, but also with planners, economic developers, public works/engineering staff, and other municipal officials in the Windham Region to create, update and standardize municipal geographic information. The Center staff will provide local, personalized service with a particular understanding of intra-disciplinary needs and planning goals.

## **Regional Website**

The Windham Region GIS & Cadastral Center will also be a website and online service in which municipal staff and the general public can access geographic information easily in a “one-stop” regional context. This service has great potential in terms of meeting the information requirements necessary for integrated planning efforts.



**Mansfield - Windham  
Commercial Center**

The online regional inventory of tax parcels and assessment data can be partnered with economic and demographic information; transportation, transit and community resources; and natural resource information in an easy-to-use, searchable online interface. While the goal of the regional mapping application is not to replace municipal map servers, smaller municipalities who are unable to provide this service on their own will be able to utilize the regional website.